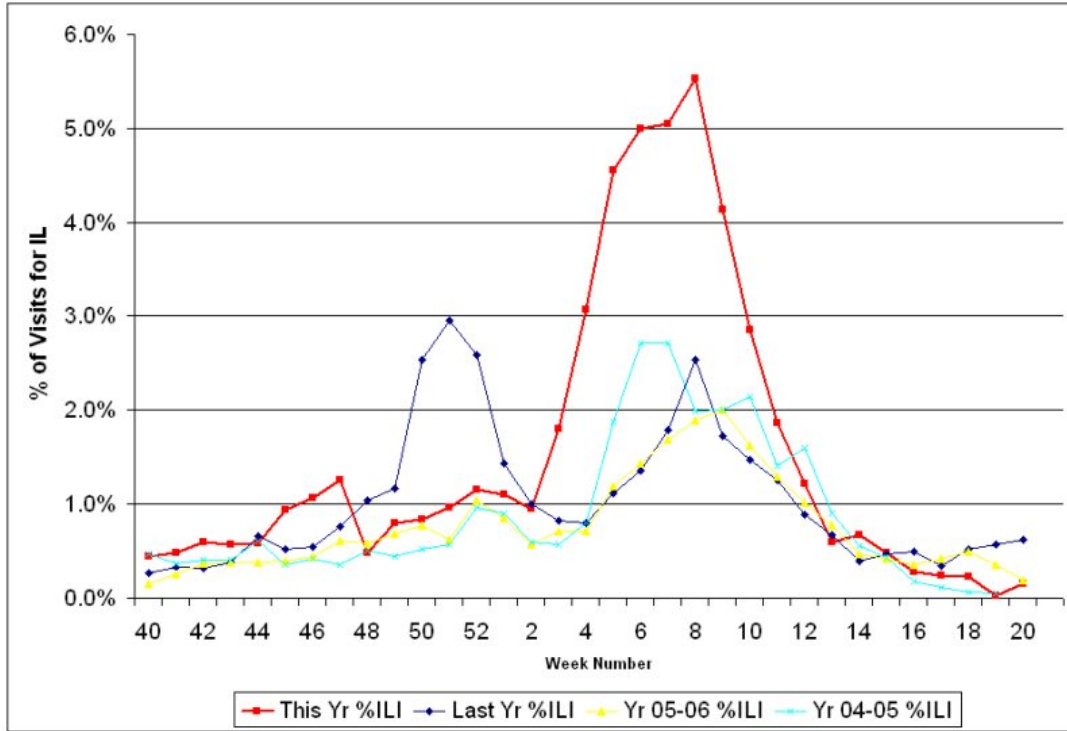


North Carolina Influenza Update
Final Weekly Statistical Report for 2007-2008 Flu Season
May 21, 2008

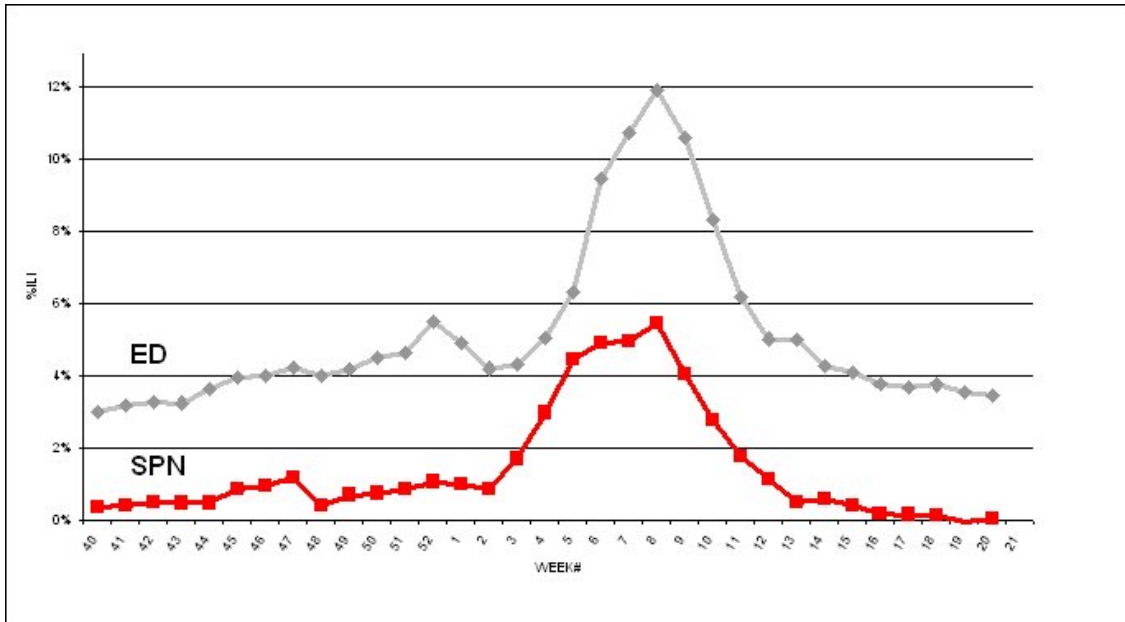
I. Influenza-Like Illnesses Reported by N.C. Sentinel Sites

Week Number	Ending	Number ILI	Patient Visits	Percent ILI
40	10/6/2007	96	21,610	0.44%
41	10/13/2007	107	22,201	0.48%
42	10/20/2007	133	22,462	0.59%
43	10/27/2007	132	22,968	0.57%
44	11/3/2007	135	23,388	0.57%
45	11/10/2007	243	25,762	0.94%
46	11/17/2007	247	23,124	1.06%
47	11/24/2007	219	17,363	1.26%
48	12/1/2007	120	24,690	0.48%
49	12/8/2007	160	20,135	0.79%
50	12/15/2007	199	23,933	0.83%
51	12/22/2007	171	17,841	0.95%
52	12/29/2007	89	7,724	1.15%
01	1/5/2008	155	14,113	1.09%
02	1/12/2008	216	22,663	0.95%
03	1/19/2008	401	22,272	1.80%
04	1/26/2008	638	20,813	3.06%
05	2/2/2008	1177	25,816	4.55%
06	2/9/2008	1320	26,397	5.00%
07	2/16/2008	1254	24,867	5.04%
08	2/23/2008	1394	25,191	5.53%
09	3/1/2008	1048	25,376	4.12%
10	3/8/2008	610	21,394	2.85%
11	3/15/2008	391	20,987	1.86%
12	3/22/2008	235	19,378	1.21%
13	3/29/2008	103	17,199	0.59%
14	4/05/2008	121	17,928	0.67%
15	4/12/2008	83	17,079	0.48%
16	4/19/2008	47	17,010	0.27%
17	4/26/2008	38	15,817	0.24%
18	5/3/2008	30	13,364	0.22%
19	5/10/2008	02	9,763	0.02%
20	5/17/2008	10	6,832	0.14%

Percentage of Visits for Influenza-like Illness Reported by Sentinel Providers
North Carolina, 2007-2008 (Red Line)
With Comparative 2006-2007 Data (Blue Line)
With Comparative 2005-2006 Data (Yellow Line)
and Comparative 2004-2005 Data (Light Blue Line)



Influenza-Like Illness Surveillance in North Carolina, 2007-2008
Comparative trend between two surveillance systems:
Sentinel Provider Network (SPN) and Hospital Emergency Department (ED)



SPN: 78 volunteer practitioners report weekly their patient workload; using ILI case definition: "fever and cough or sore throat."

ED: As of 5/17/2008, 110 hospitals report daily ED visits electronically through the NC DETECT System, using ILI case definition: "ILI cases must include any case with the term "flu" or "influenza" or have at least one fever term and one influenza-related symptom."

**II. Influenza Virus Isolates Identified by the State Laboratory of Public Health
During the 2007-2008 Influenza Season**

Week Number	Ending	Total Confirmed	County	Virus Type	No. Isolates of Same Virus
40	10/6/2007	00	N/A	N/A	0
41	10/13/2007	01	Buncombe	A/H3	1
42	10/20/2007	00	N/A	N/A	0
43	10/27/2007	00	N/A	N/A	0
44	11/03/2007	00	N/A	N/A	0
45	11/10/2007	00	N/A	N/A	0
46	11/17/2007	00	N/A	N/A	0
47	11/24/2007	00	N/A	N/A	0
48	12/1/2007	03	Granville	B	1
			Guilford	A/H3	1
			Orange	A/H3	1
49	12/8/2007	00	N/A	N/A	0
50	12/15/2007	00	N/A	N/A	0
51	12/22/2007	03	Nash	A/H3	2
			Nash	A/H3	1
52	12/29/2007	01	Wake	A/H1	1
01	1/5/2008	02	Orange	A/H1	2
02	1/12/2008	03	Wake	A/H1	1
			Wilkes	A/H1	1
			Caldwell	A/H3	1
03	1/19/2008	13	Cabarrus	B	1
			Durham	A/H3	3
			Guilford	A/H3	2
			Orange	A/H3	4
			Wake	A/H1	2
			Wake	A/H3	1
04	1/26/2008	23	Buncombe	A/H3	3
			Cabarrus	A/H3	1
			Cumberland	A/H3	1
			Durham	A/H1	1
			Forsyth	A/H3	4
			Guilford	A/H1	1
			Guilford	A/H3	2
			Lee	A/H1	1
			Mecklenburg	A/H1	1
			Mecklenburg	A/H3	1
			Pitt	A/H1	3
			Pitt	A/H3	1
			Wake	A/H1	1

**II. Influenza Virus Isolates Identified by the State Laboratory of Public Health
During the 2007-2008 Influenza Season**

Week Number	Ending	Total Confirmed	County	Virus Type	No. Isolates of Same Virus
			Wake	A/H3	1
			Watauga	A/H3	1
05	2/2/2008	88	Beaufort	A/H1	1
			Beaufort	A/H3	2
			Buncombe	A/H3	3
			Cumberland	A/H3	2
			Durham	A/H3	3
			Durham	B	1
			Guilford	A/H1	1
			Guilford	A/H3	13
			Jackson	A/H1	1
			Jackson	A/H3	1
			Mecklenburg	A/H3	1
			Orange	A/H3	3
			Pender	A/H3	1
			Pitt	A	1
			Pitt	A/H1	1
			Pitt	A/H3	16
			Robeson	A/H1	1
			Robeson	A/H3	3
			Wake	A/H1	4
			Wake	A/H3	16
			Wake	B	1
			Watauga	A/H3	12
06	2/9/2008	98	Buncombe	A/H1	2
			Buncombe	A/H3	12
			Buncombe	B	1
			Cabarrus	A/H3	1
			Cabarrus	B	1
			Caldwell	A/H1	1
			Caldwell	A/H3	2
			Cumberland	A/H3	13
			Durham	A/H3	6
			Forsyth	A/H3	2
			Guilford	A/H3	2
			Hertford	A/H1	1
			Mecklenburg	A/H3	3
			Mitchell	A/H3	1
			Orange	A/H3	2
			Orange	B	1
			Pasquotank	A/H1	1

**II. Influenza Virus Isolates Identified by the State Laboratory of Public Health
During the 2007-2008 Influenza Season**

Week Number	Ending	Total Confirmed	County	Virus Type	No. Isolates of Same Virus
			Pender	A/H3	2
			Pitt	A/H1	2
			Pitt	A/H3	10
			Richmond	A/H3	1
			Union	A/H1	2
			Union	A/H3	3
			Wake	A/H1	3
			Wake	A/H3	16
			Watauga	A/H3	4
			Wayne	A/H3	2
			Wilkes	A/H3	1
07	2/16/2008	102	Beaufort	A	2
			Bertie	A/H1	1
			Bertie	A/H3	1
			Buncombe	A	2
			Buncombe	A/H1	1
			Buncombe	A/H3	10
			Cabarrus	A	1
			Cabarrus	A/H3	3
			Caldwell	A	2
			Caldwell	A/H3	1
			Cumberland	A	1
			Cumberland	A/H3	13
			Durham	A	14
			Durham	A/H1	1
			Durham	A/H3	6
			Granville	A/H3	1
			Greene	A/H3	2
			Guilford	A	3
			Guilford	A/H1	2
			Guilford	A/H3	7
			Lee	A/H3	1
			Mecklenburg	A/H1	1
			Mecklenburg	A/H3	10
			Mecklenburg	B	2
			Pender	A	3
			Pitt	A	1
			Pitt	A/H3	2
			Robeson	A	2
			Rockingham	A	2
			Union	A	1

**II. Influenza Virus Isolates Identified by the State Laboratory of Public Health
During the 2007-2008 Influenza Season**

Week Number	Ending	Total Confirmed	County	Virus Type	No. Isolates of Same Virus
			Union	A/H3	1
			Union	B	1
			Watauga	A/H3	1
08	2/23/2008	79	Buncombe	A	3
			Buncombe	A/H3	4
			Cabarrus	A	1
			Cabarrus	A/H3	7
			Cabarrus	B	1
			Caldwell	A	1
			Caldwell	A/H3	2
			Catawba	A	1
			Cumberland	A/H3	14
			Dare	A	4
			Dare	A/H3	2
			Durham	A	10
			Durham	A/H3	4
			Forsyth	A/H3	1
			Guilford	A	6
			Guilford	A/H3	1
			Lee	A/H3	2
			Onslow	A/H3	1
			Orange	A	1
			Orange	A/H1	1
			Pasquotank	A	1
			Pender	A	1
			Richmond	A/H3	1
			Union	A	1
			Watauga	A	1
			Watauga	A/H3	4
			Wayne	A	1
			Wayne	A/H3	1
			Yancey	A	1
09	3/1/2008	49	Buncombe	A	3
			Buncombe	A/H1	1
			Buncombe	A/H3	7
			Buncombe	B	2
			Cabarrus	A	2
			Cabarrus	A/H3	1
			Caldwell	A	2
			Cumberland	A/H3	8
			Dare	A	1

**II. Influenza Virus Isolates Identified by the State Laboratory of Public Health
During the 2007-2008 Influenza Season**

Week Number	Ending	Total Confirmed	County	Virus Type	No. Isolates of Same Virus
			Dare	A/H3	1
			Durham	A/H3	1
			Durham	B	1
			Guilford	A	1
			Guilford	A/H1	1
			Guilford	A/H3	5
			Lee	A	1
			Pender	A	1
			Pender	A/H3	4
			Richmond	A/H3	1
			Watauga	A	1
			Wayne	A	2
			Wayne	A/H3	2
10	3/8/2008	21	Beaufort	A	3
			Beaufort	A/H1	1
			Beaufort	A/H3	1
			Cabarrus	A/H1	1
			Cabarrus	A/H3	1
			Caldwell	A	1
			Durham	A/H3	2
			Guilford	A	1
			Guilford	A/H3	1
			Hertford	A/H3	1
			Lee	A	1
			Lee	A/H3	1
			Lee	B	1
			Pender	A/H3	2
			Rowan	A	1
			Rowan	B	1
			Yancey	A/H3	1
11	3/15/2008	17	Cumberland	A/H3	8
			Cumberland	B	1
			Durham	B	1
			Guilford	A/H1	1
			Guilford	B	1
			Onslow	A/H3	1
			Pender	A/H3	1
			Rockingham	A/H3	1
			Rowan	A/H3	1
			Watauga	B	1
12	3/22/2008	07	Cabarrus	B	1

**II. Influenza Virus Isolates Identified by the State Laboratory of Public Health
During the 2007-2008 Influenza Season**

Week Number	Ending	Total Confirmed	County	Virus Type	No. Isolates of Same Virus
			Catawba	B	1
			Forsyth	A/H3	1
			Guilford	A/H3	1
			Guilford	B	1
			Onslow	B	1
			Rowan	A/H3	1
13	3/29/2008	10	Cumberland	A/H3	3
			Onslow	B	1
			Pender	A/H3	1
			Pender	B	4
			Rockingham	A/H3	1
14	4/5/2008	00	N/A	N/A	N/A
15	4/12/2008	04	Cumberland	B	1
			Onslow	B	1
			Pender	B	1
			Rowan	B	1
16	4/19/2008	00	N/A	N/A	N/A
17	4/26/2008	00	N/A	N/A	N/A
18	5/3/2008	00	N/A	N/A	N/A
19	5/10/2008	00	N/A	N/A	N/A
20	5/17/2008	None Received	N/A	N/A	N/A
TOTAL ISOLATES IDENTIFIED TO DATE				A	92
				A/H1	48
				A/H3	356
				B	34
				Total	530